



# 板谷科技

POLYVALLEY

让生活更自然

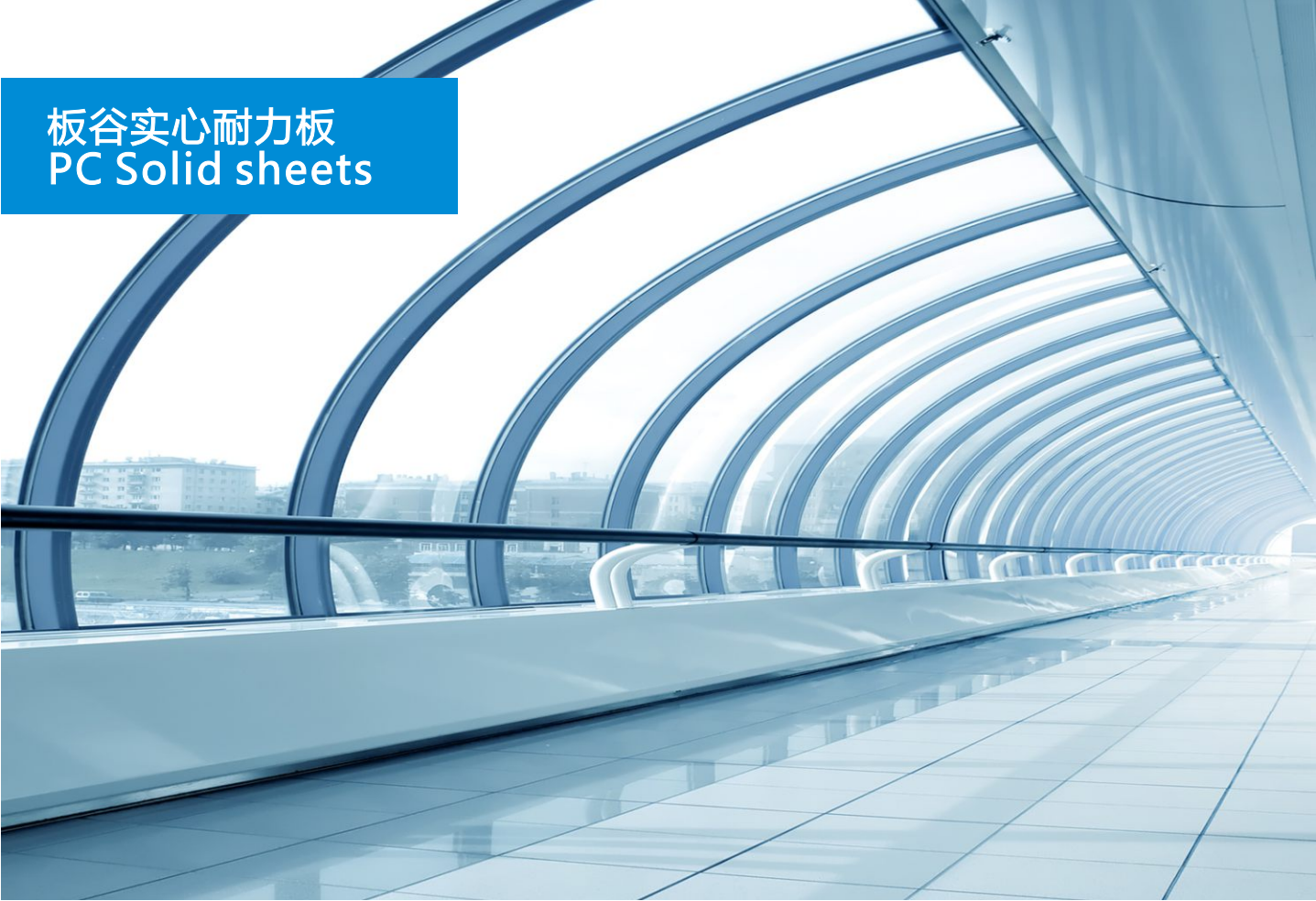
值得信赖的合作伙伴  
YOUR RELIABLE PARTNER



板谷实心耐力板  
PC SOLID SHEET

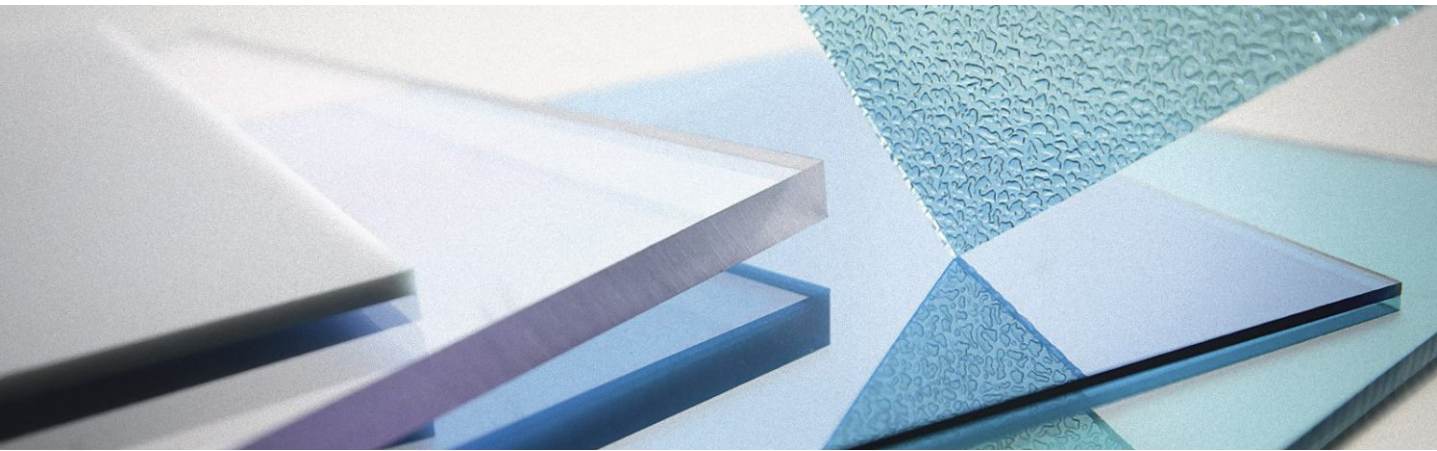


# 板谷实心耐力板 PC Solid sheets



板谷PC实心板具有优越的物理性能及化学性能，其重量轻，但是抗冲击性却非常的高。而且还具有非常高的透光度。板材的表面具有UV共挤涂层，不但可以抵抗紫外线，还可以大大地增加板材的使用寿命。

Polyvalley PC sheets are flat with excellent physical and mechanical properties. Superior shock resistance as well as high elasticity makes them almost unbreakable. The PC solid sheet can be as clear as glass, but the density of PC is only 50% of glass, and is much more solid than glass. This is very important when high safety, long life expectancy and good light transmission are needed. The external side of Polyvalley PC sheet is coated with U.V. protection (can be on both sides if required) warranting resistance to aging due to atmospheric agents and UV rays. Polyvalley PC solid sheets are offered with 10 years warranty.



## 规格参数 Typical specifications

厚度 Thickness mm	最小弯曲半径 Min. Bend Radius (mm)	声音降低值 Soundproof Index (dB)	标准宽度 Standard Width (mm)	长度 Length(mm)	比重 Specific Gravity	标准颜色 Standard Color
2	400	25	1560, 1830, 2100	6000 (可定制任意长度)	1.2	透明clear, 乳白 milky white, 湖 蓝sapphire blue, 绿色 green, 茶色 bronze, 银灰 silvery grey
4	800	27				
5	1000	28				
6	1200	29				
8	1600	31				
10	2000	32				
12	2400	34				
13	2600	35				
14	2800	35				
15	3000	36				
17	3400	37				
20	4000	38				

### 特点

- 耐冲击性能极强
- 可冷弯, 适合不同形状的安装
- 透光率高, 可媲美玻璃
- 高隔热及保温性能
- 比重轻非常利于安装
- 双面UV涂层, 可更好地抵挡紫外线

### 应用

- 高速公路隔音屏
- 广告屏
- 室内隔断装饰
- 淋浴门
- 防暴门窗
- 汽车飞机挡风玻璃

### FEATURES

- Very strong impact resistance, almost be unbreakable
- Be cold bending, can be installed to any design free formation
- Very high light transmission as glass
- Good heat insulation
- Light gravity weight, very suitable for installation
- Double UV protection

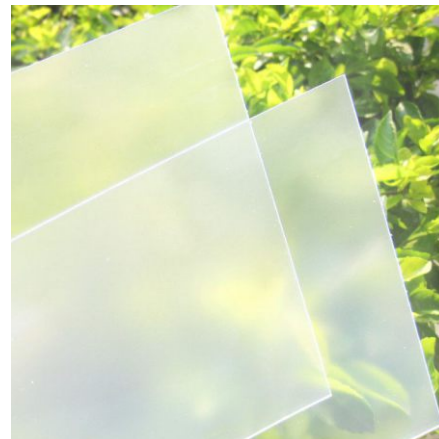
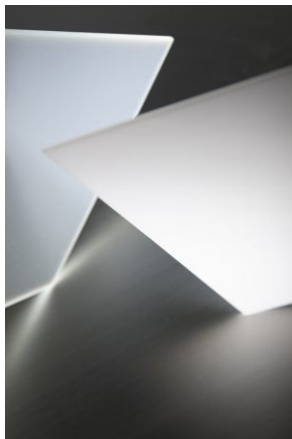
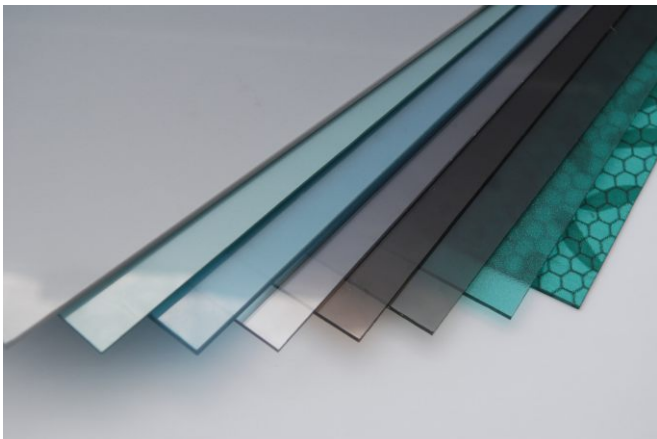
### APPLICATIONS

- Highway soundbarrier
- Advertising screen
- Indoor partition
- Door for bathroom
- Riot windows and doors
- Car or aircraft windshield

## 板材种类 different types

板谷科技可定做各种特殊功能板材, 如光扩散广告专用板材, 磨砂板, 颗粒板, 防静电板, 防雾滴板等

Polyvalley offer various special PC solid sheet such as diffusion sheet, frosted sheet, anti-scratch, ant-static, anti-fog sheets etc.

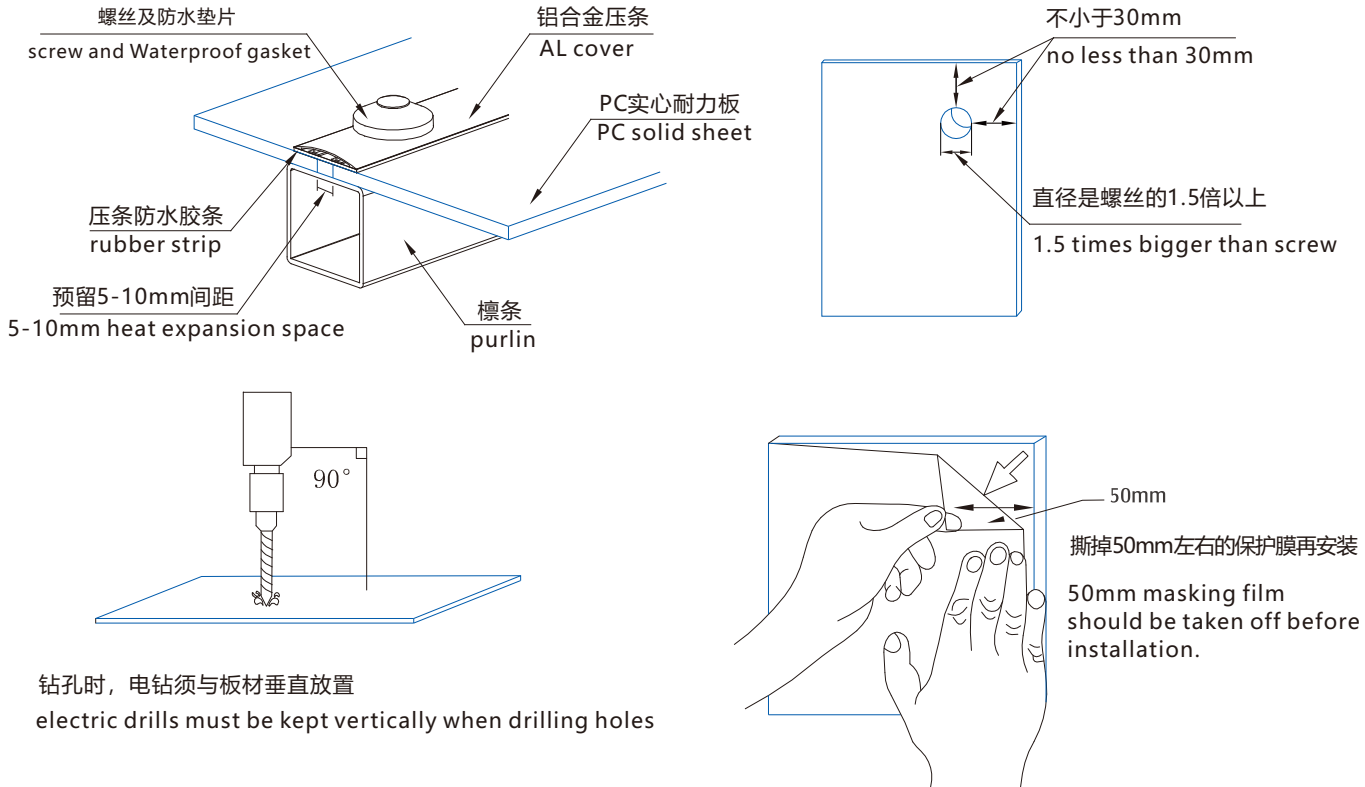


# 板谷PC实心耐力板安装简介及注意事项 Polyvalley Solid Sheets Installation

板谷科技PC耐力板的安装描述  
PC solid sheets installation:

1. 安装PC耐力板时，应先把板边缘表面的保护膜掀起10cm左右，有利于中性密封胶和板的粘结，达到更好的防水效果；  
10cm masking film around the sides should be taken off before installation. Only neutral glue could be used for sealing.
2. 为防止热胀冷缩，在安装耐力板时，两板间的接点处应预留至少5-10MM的伸缩空隙。如跨度大的安装预留伸缩空间按PC耐力板板的热膨胀系数而定；  
5-10mm space should be kept on the connection part of two sheet in case of heat expansion. The space distance should be changed accordingly to different sheet length.
3. 耐力板安装好后应立即撕掉保护膜；  
Masking film should be taken off immediately after finish installation
4. 安装时如果需要在PC耐击板上直接打孔，一般孔径必须要在螺栓直径1.5倍以上。应选用头部大于孔径的螺栓，并加防水；  
Expansion holes(1.5 times bigger than screw) should be drilled. Screw is banned to used for drilling the sheet directly
5. 安装时螺栓不可过紧，否则会引发耐力板爆裂及防水问题。  
Screw can not be locked too tight in case of sheet breakage.
6. PC板双面有保护膜，抗紫外线处理面的保护膜印有标志，安装时此面要朝阳。  
The UV side must be faced to the Sun.

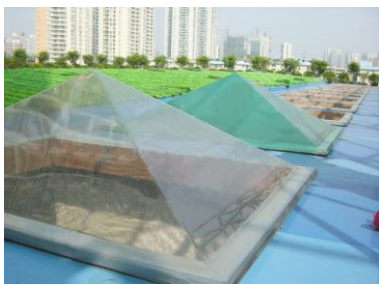
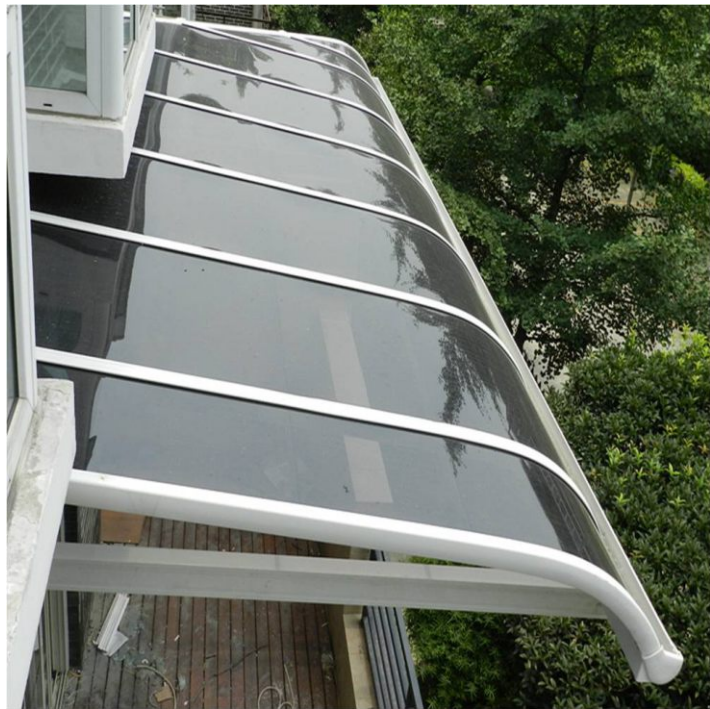
安装简图installation chart:



实心耐力板应用案例图片  
SOLID SHEETS GALLERIES



板谷科技  
POLYVALLEY  
让生活更自然





## 安装与存放 Installation and storage

PC耐力板需水平放置并存放于阴凉处，不得与任何带酸碱性物品接触。严禁使用硅胶填堵阳光板洞口，安装完成后应尽快撕去保护膜。The PC solid sheets must be kept horizontally and placed in the shade. It can not be touched with any acid or alkaline material. Glue is banned to be used to fill the hollow of PC multi-wall sheets. Masking film should be taken off once finish installation.



**板谷科技**  
POLYVALLEY  
让生活更自然

总部地址：天津武清区宏旺道2号板谷科技园

Headquarters ADD: No.2 Hongwang Road Polyvalley Technology Park, Wuqing Tianjin, China

业务部 Sales:

电话：022-5967-2888 TEL: (+86)-22-5967-2888

传真：022-5967-3666 FAX: (+86)-22-5967-3666

热线：400 086 3628 Hotline: (+86)400 086 3628

Email: sales@polyvalley.com

网站：www.polyvalley.com.cn

website: www.polyvalley.com

技术部 Supports:

电话：022-5967-6909 TEL: +86-22-5967-6909

传真：022-5967-3666 FAX: +86-22-5967-3666

Email: support@polyvalley.com